

Company Profile



Tokyo Daiichi Gousei



President
(Dr.) Hidenori Kotake



Headquarters

Message from the President

We, Tokyo Daiichi Gousei Co., Ltd. (TDG), have always been making a challenge to develop large scale of plastics molding under the thought of "Business is a master" since its foundation.

We think that this challenging spirit is our standing point. Fortunately, we are privileged to have good customers and cooperative companies and recognized as a company which can do anything in the field of plastics molding.

It would be most appreciated if we would receive further favor of you.

Company Overview

- **Company Name:** Tokyo Daiichi Gousei Co., Ltd.
- **Address:** 293 Ohsone, Yashio City, Saitama 340-0834, Japan
- **Capital:** ¥ 30 million
- **Board members:** President (Dr.) Hidenori Kotake
Directors (Mr.) Toshiaki Kanao
(Ms.) Takako Hiramatsu
(Ms.) Yasuno Kanao
Auditor (Ms.) Kakuko Kotake
- **Number of Employees:** About 40
- **Main business:** Plastic injection molding, Assembling of materials, and Supervision of mold manufacturing.
- **Main customers:** Mutoh Industries Ltd., Fujikura Components Co., Ltd., Fukoku Bussan Co., Ltd., Sato Metal Trading Co., Ltd., TAD Corporation, YMD Co., Ltd., etc
- **Main suppliers of the material:** Kashiwagi Co., Ltd., Yamaso Co., Ltd., Yamashita Materials Corporation,
- **Business affiliations with financial agencies:** Japan Finance Corporation (JFC), Saita Resona Bank, Ltd., and The Bank of Tokyo-Mitsubishi UFJ, Ltd.
- **Affiliated association:** Association of Plastics Molders, East Japan



Main Facilities

(As of 1 Nov., 2012)

Injection Molding Machines (mold clamping force)

1,300 ton	1 unit	850 ton	2 units	450 ton	1 unit
950 ton	1 unit	650 ton	2 units		

(Made by Toshiba Machine Co., Ltd., Mitsubishi Heavy Industries Plastic Technology Co., Ltd., and Nissei Plastic Industrial Co., Ltd.)

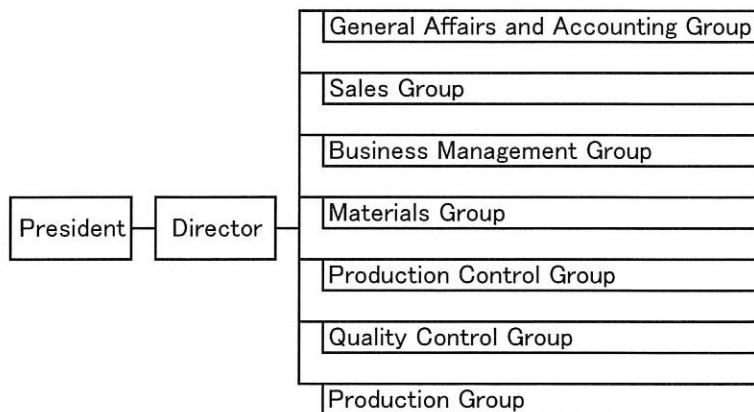
Company History

- 1963 Tokyo Daiichi Gousei Co., Ltd. (TDG) was founded with the capital of ¥ 7.5 million and TDG constructed its Tokyo Factory in Adachi-ku, Tokyo. Mr. Tamotsu Hiramatsu became the President.
- 1967 TDG increased its capital to ¥ 17.5 million.
- 1969 TDG constructed its Yashio Factory and began to produce washing machine tubs for Mitsubishi Electric Corporation. TDG won the prize of the Small and Medium Enterprise Agency's Director at the contest of good molded articles organized by All Japan Plastic Products Industrial Federation.
- 1970 TDG increased its capital to ¥ 30 million.
- 1972 TDG expanded its Yashio Factory, installed two sets of injection molding machine of which mold clamping force is 1,250 ton, and began to produce 30,000 tubs of washing machine per month for Mitsubishi Electric Corporation and Fujitsu General Ltd.
- 1975 TDG began plastics molding of parts for home electric appliances such as refrigerator and television.
- 1980 TDG began plastics molding of automobile parts such as bumpers.
- 1982 TDG began plastics molding of office automation equipments such as printers.
- 1991 TDG replaced its injection molding machines (850 ton and 1,300 ton).
- 1992 TDG began gas-assisted injection molding.
- 2001 TDG replaced its injection molding machines (850 ton and 450 ton).
- 2002 Dr. Hidenori Kotake became the President.



Scene of plastics molding (450 ton)

Organization Chart



Cooperative companies

About 30 companies in the fields of metal mold manufacturing and plastic molding.

Quality Assurance System

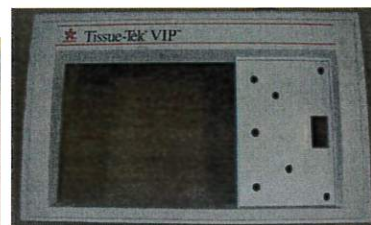
- Good design and maintenance of metal mold based on its 40 years experience of parts
- Quality assurance of finished products including assembling process.
- Total management system from receiving order to its delivery.



Home electric appliance and parts of light electrical equipments



OA equipments



Automobile parts and office equipments



Tokyo Daiichi Gousei Co. Ltd

Access to the company

- (By train) Take 'Tsukuba Express' and get off at Yashio St. Change to 'Tobu Bus' for Yashio Shako and get off at Ohsone bus stop. And 3 minutes walk from the stop.
- (By car) Take 'No.6 Misato Route' of Metropolitan Expressway and exit at Yashio Minami I.C. And 5 minutes drive from the I.C.

Headquarters & Main Factory

Add: 293 Ohsone, Yashio City, Saitama 340-0834, Japan
Tel: +81 (0)48-996-0921
Fax: +81 (0)48-997-1228
Email: kotake@tokyo-topmold.co.jp

